

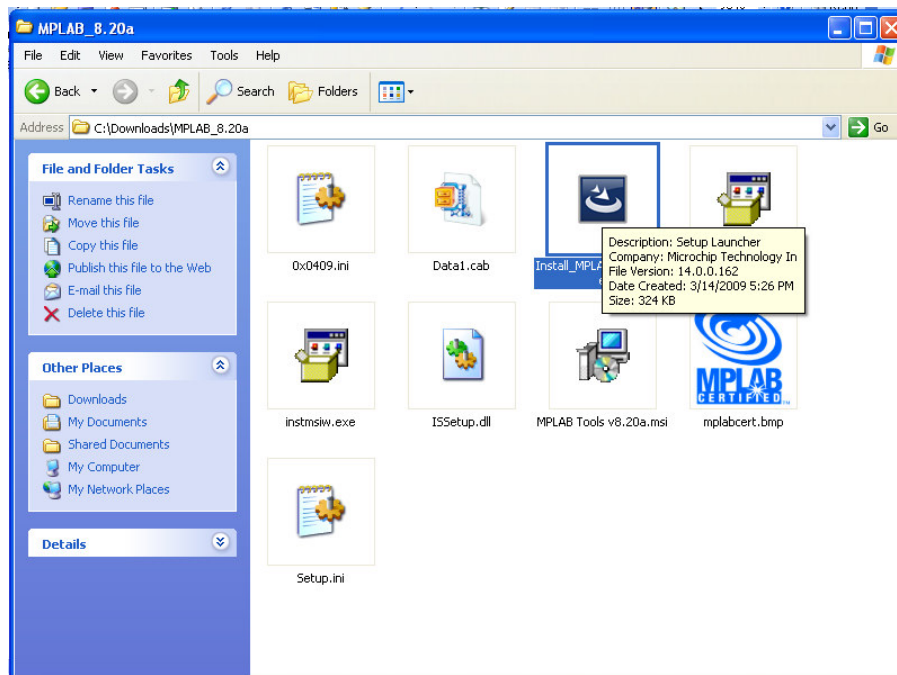
MPLAB IDE and HI-TECH PICC-Lite Installation

MPLAB Integrated Development Environment (IDE) is a comprehensive editor, project manager and design desktop for application development of embedded designs using Microchip PICmicro and dsPIC microcontrollers. It is a free product of Microchip Inc. and is an effort to make source code development as smooth and comprehensive as possible. It is called an Integrated Development Environment, or IDE, because it provides a single integrated “environment” to develop code for embedded microcontrollers. MPLAB IDE provides a good platform for other compiler language tools to be integrated. MPLAB C17, MPLAB C18 and MPLAB C30 from microchip provide fully integrated, optimized code. Current version of MPLAB IDE is 8.10. For the latest version of MPLAB IDE, please download from Microchip website, www.microchip.com.

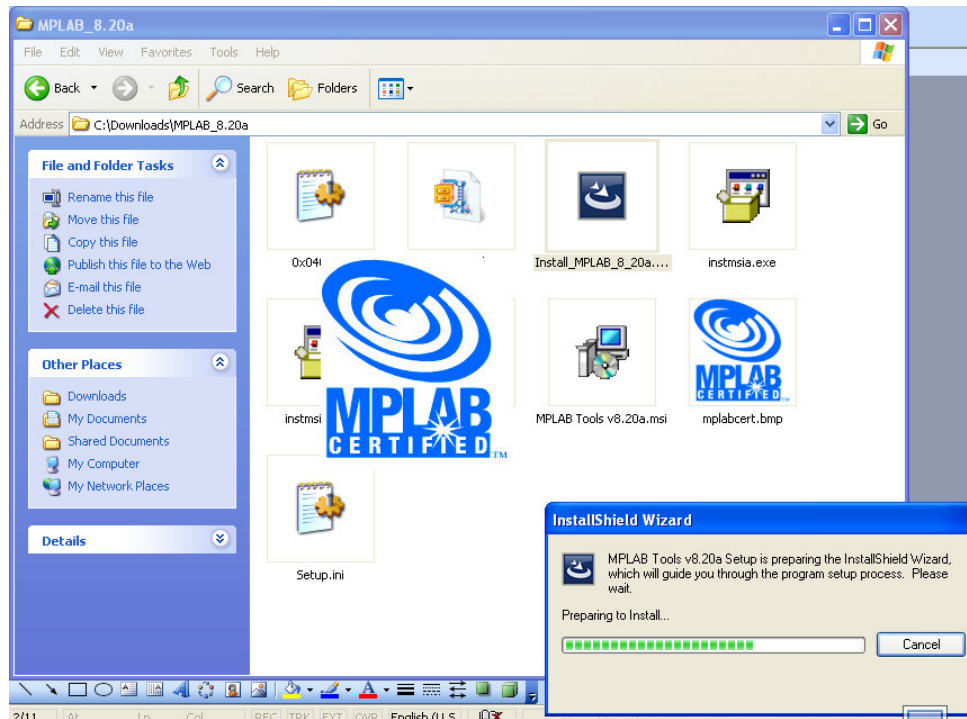
HI-TECH Software is the third party compilers for PIC10/12/16 and PIC18, dsPIC, PIC24 and PIC32 devices. It is the only compiler vendor with comprehensive support for all PIC10/12/14/16/17/18/24/32 MCUs, plus the dsPIC Digital Signal Controllers. HI-TECH Software has teamed with Microchip Technology Inc. for over a decade. It is a world class provider of ANSI C compilers: many featuring Omniscent Code Generation™ (OCG) --a whole-program compilation technology. The Lite mode has OCG optimizations disengaged, and is ideal for entry level students and hobbyists. The HI-TECH PICC-Lite version 9.60PL1 compiler is comes together with the installer of MPLAB V8.10.

Please install MPLAB IDE and HI-TECH PICC Lite according to the following steps.

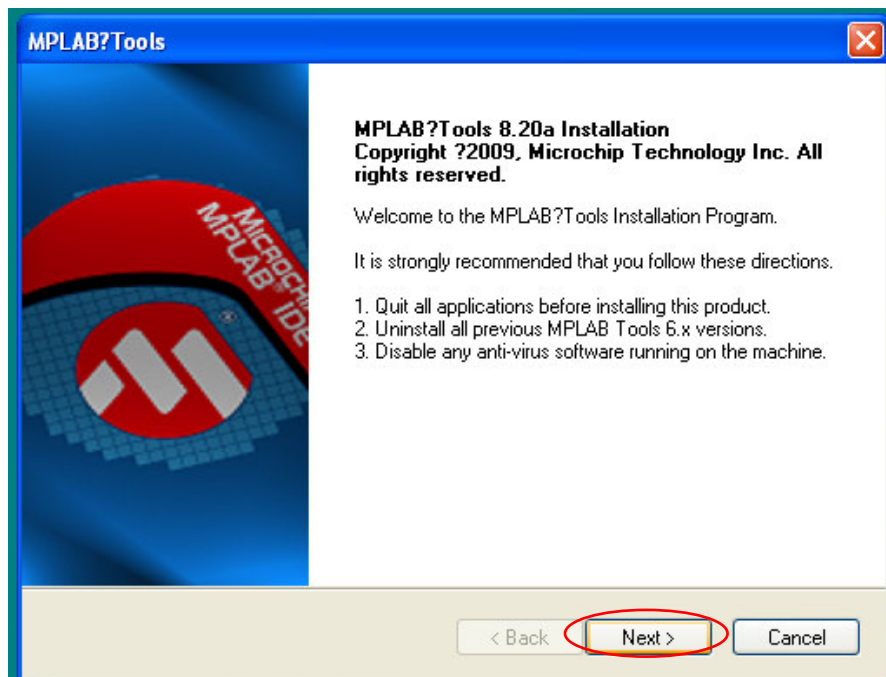
1. Please double click on the Setup Launcher to install MPLAB V8.20a.



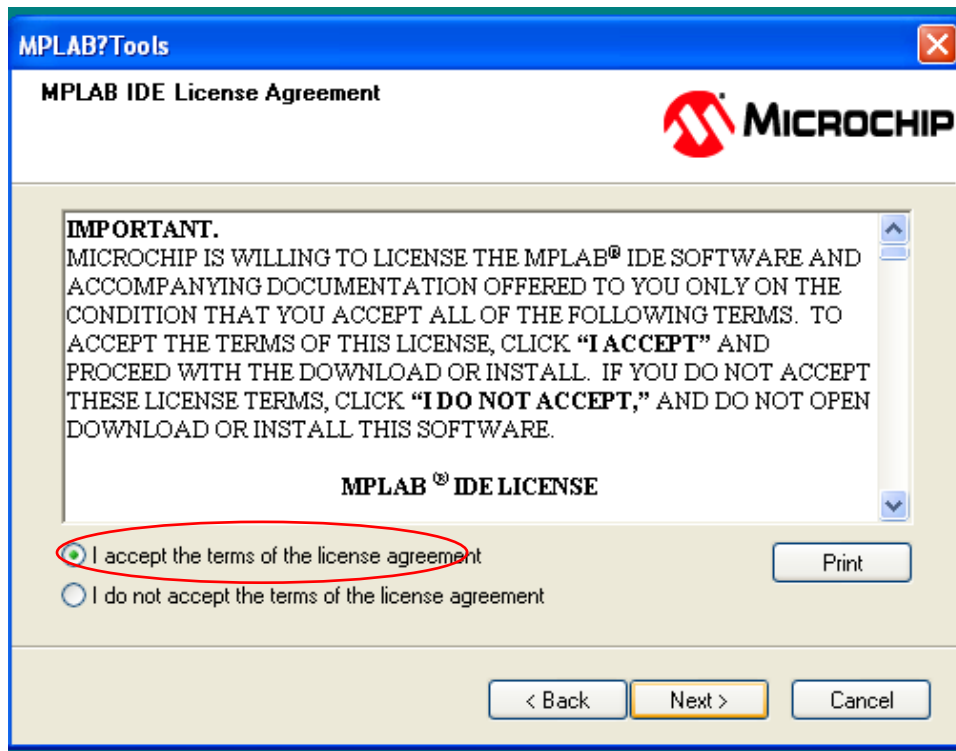
2. The InstallShield Wizard will pop out.



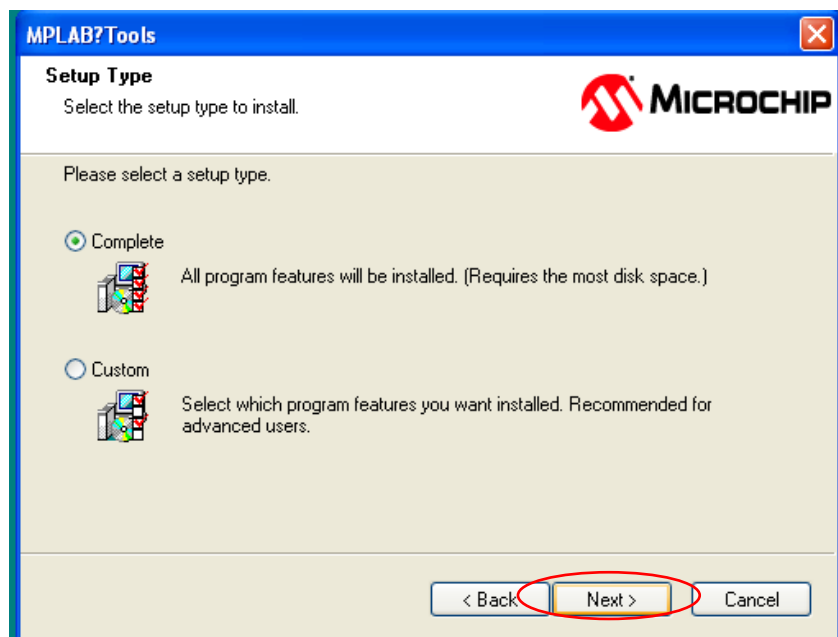
3. After all the directions shown in the welcome note (as in following diagram) is done, please click *Next*> for next step.



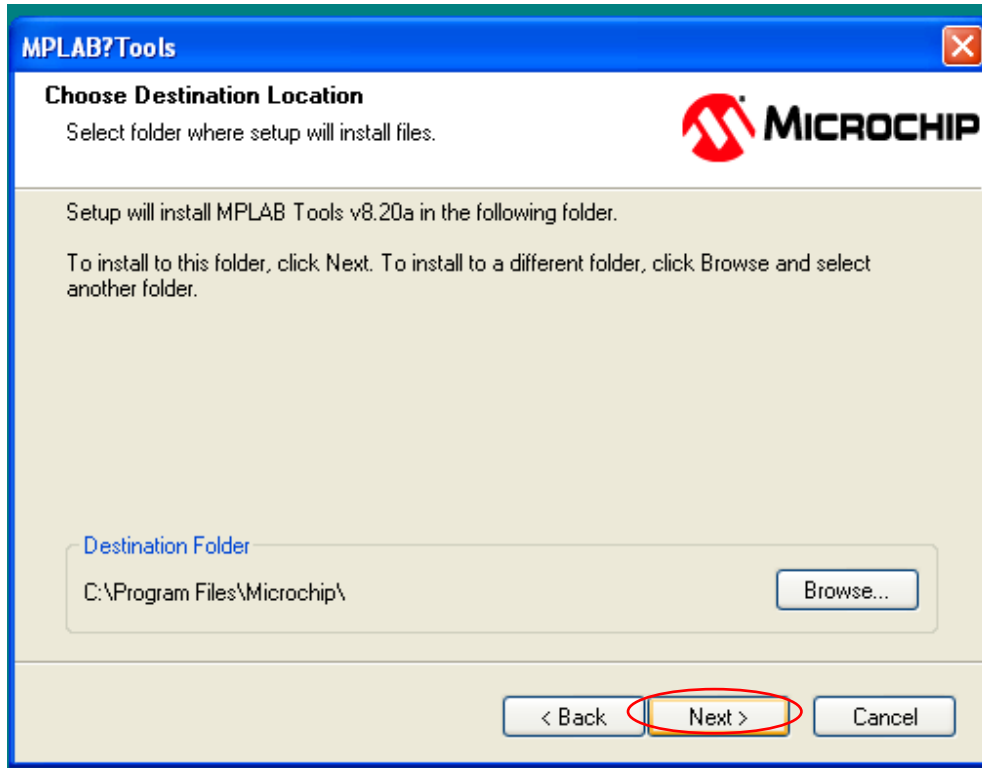
4. Please select *I accept the terms of the license agreement* if it is not selected in the diagram below, and click *Next>* after this.



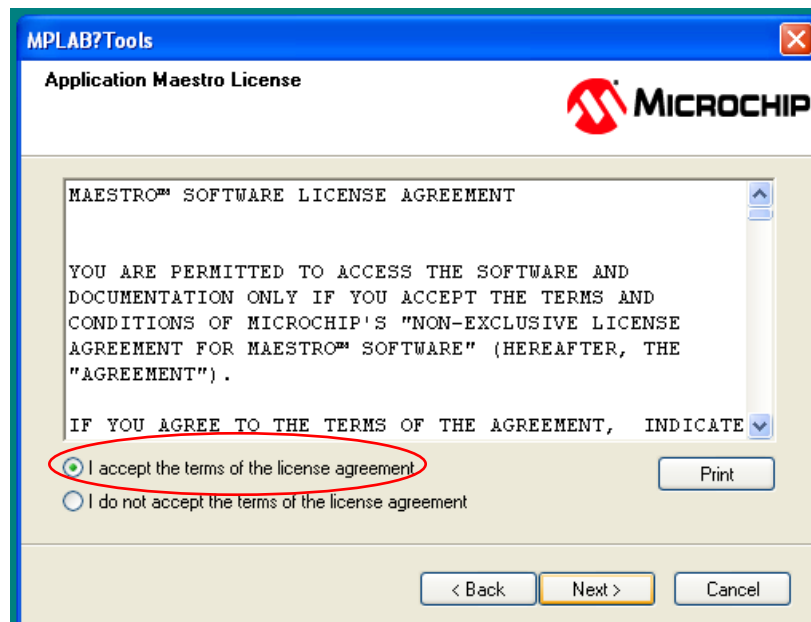
5. Please select *Complete* for the setup type to install all program features, and click *Next>* to next step.



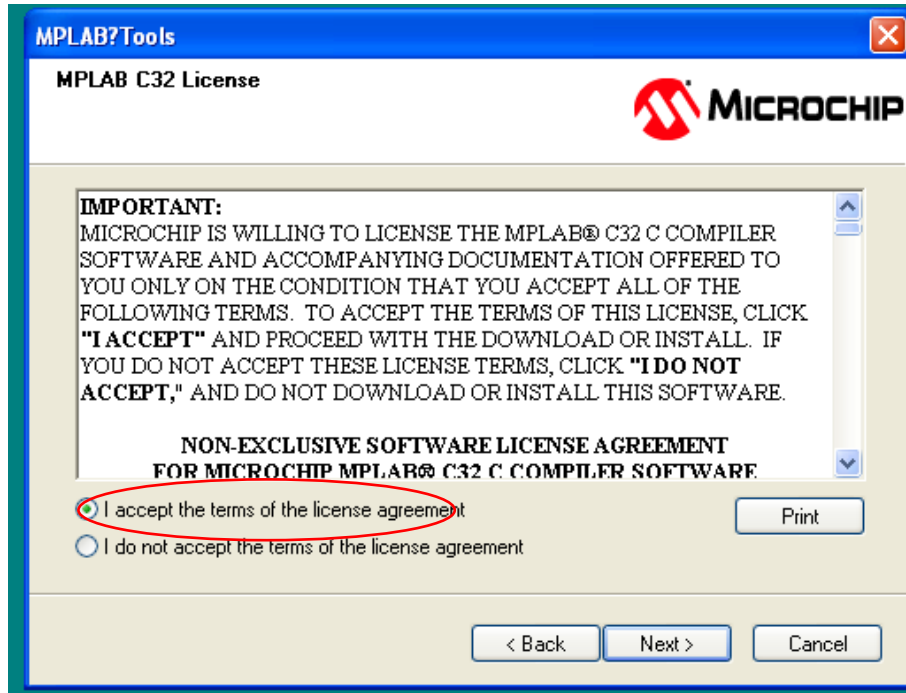
6. In the *Choose Destination Location*, user is recommended to use the default destination folder, which is *C:\Program Files\Microchip* or user is also free to select the other destination folder by using the *Browse...* button to browse to the desired destination folder. After that, click *Next>* for next step.



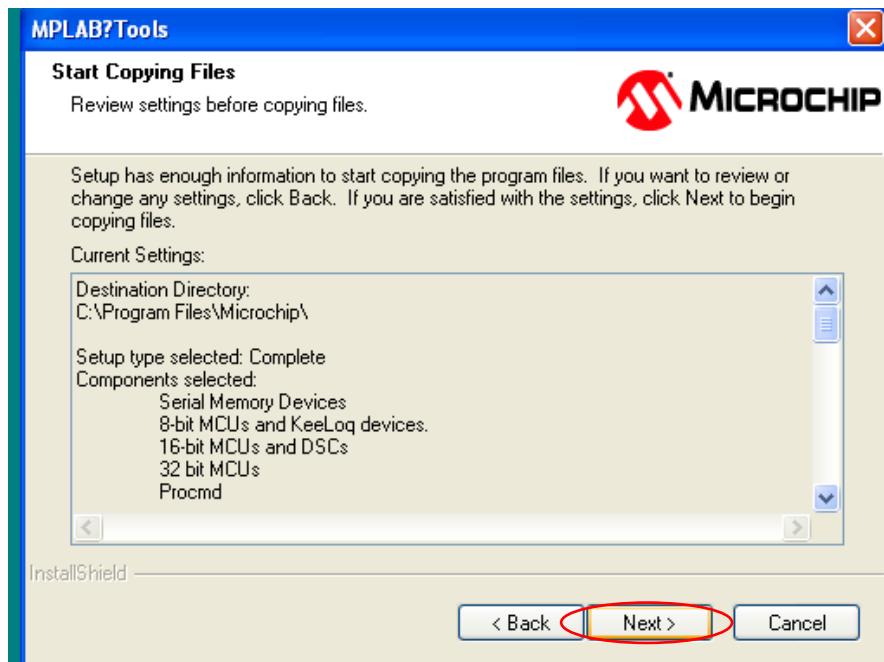
7. Please select *I accept the terms of the license agreement* if it is not selected in the diagram below, and click *Next>* after this.



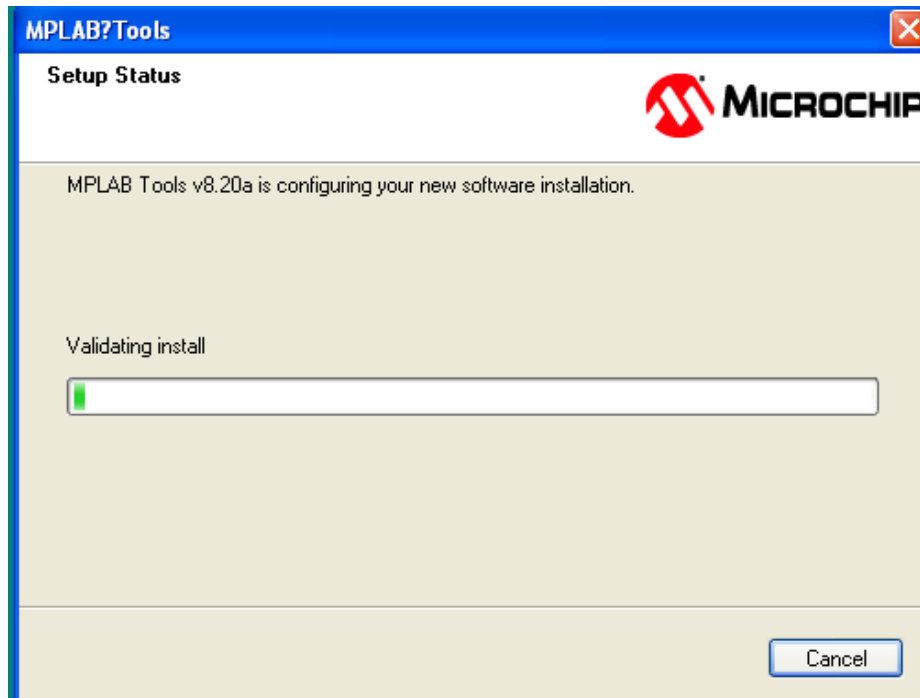
8. Please select *I accept the terms of the license agreement* again for the window shown below, and click *Next>* after this.



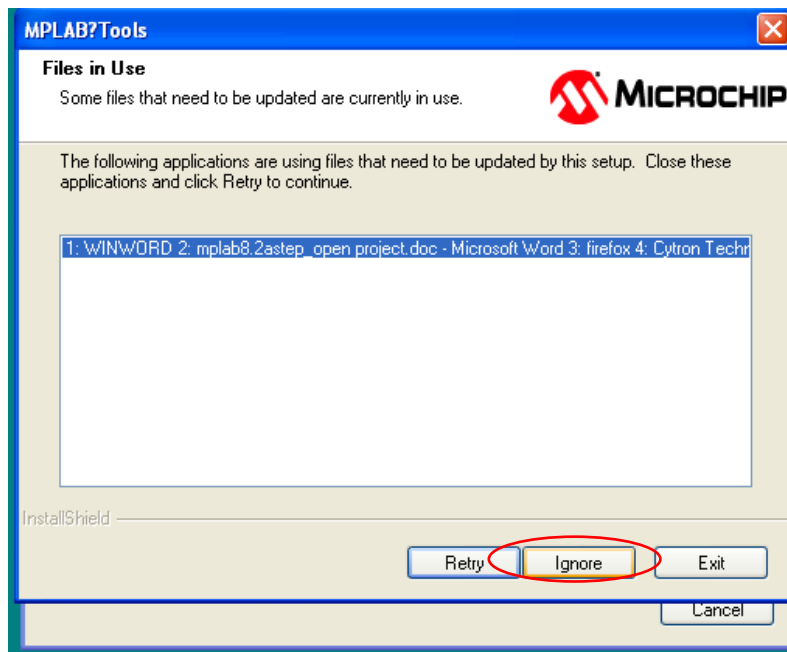
9. Please click *Next>* for the diagram below.



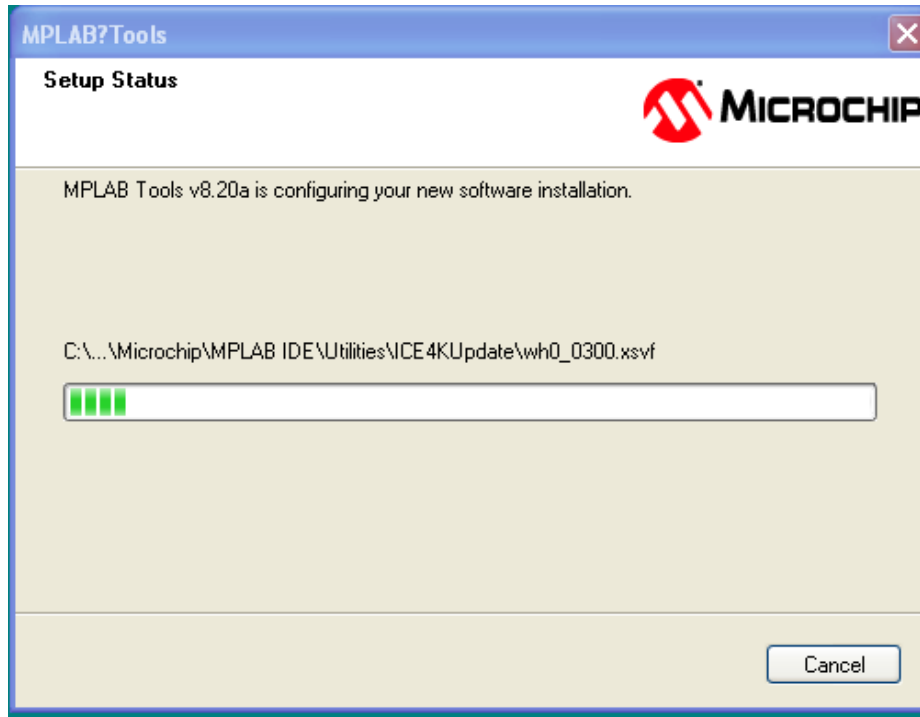
10. Please wait for awhile for the installation process shown in diagram below.



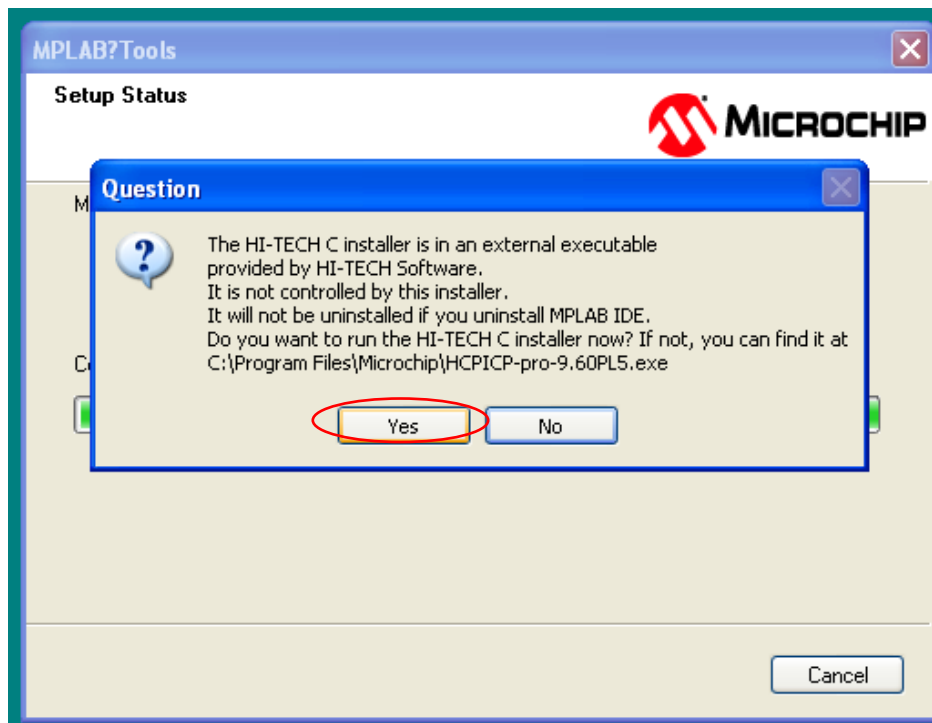
11. A window will pop out if there is any program that did not close at the beginning of the installation, user is recommended to close the entire unnecessary program and click *Retry* to proceed on the installation. User may also click on *Ignore* if you need to run the other program concurrently. For this example, *Ignore* is clicked.



12. Please wait for the installation process to be completed.



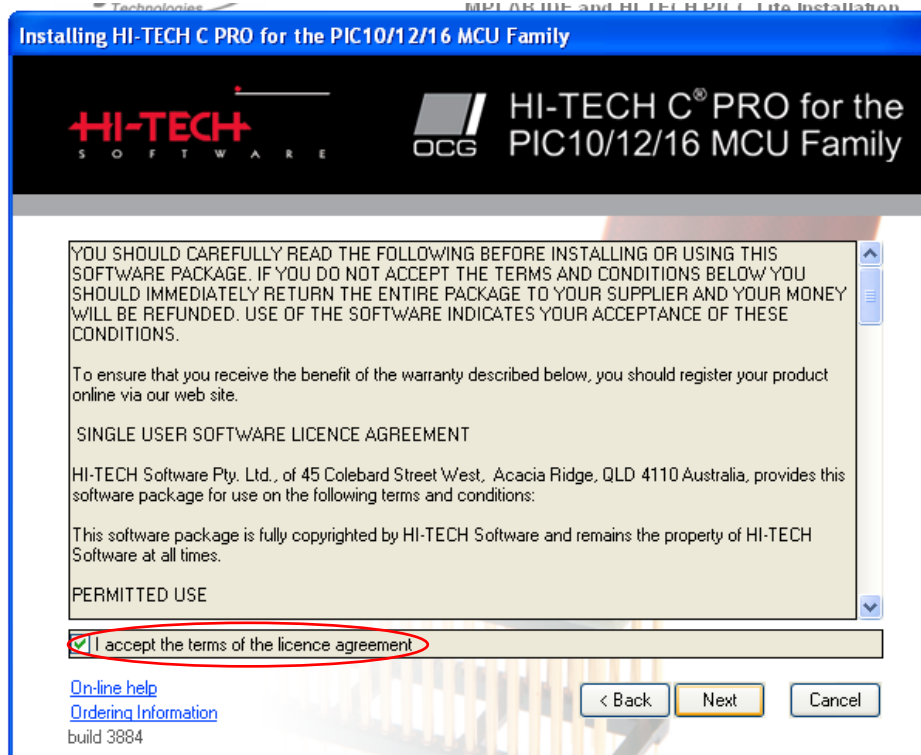
13. A window for *Question* will pop out, please click *OK* to proceed with installation of HI-TECH C..



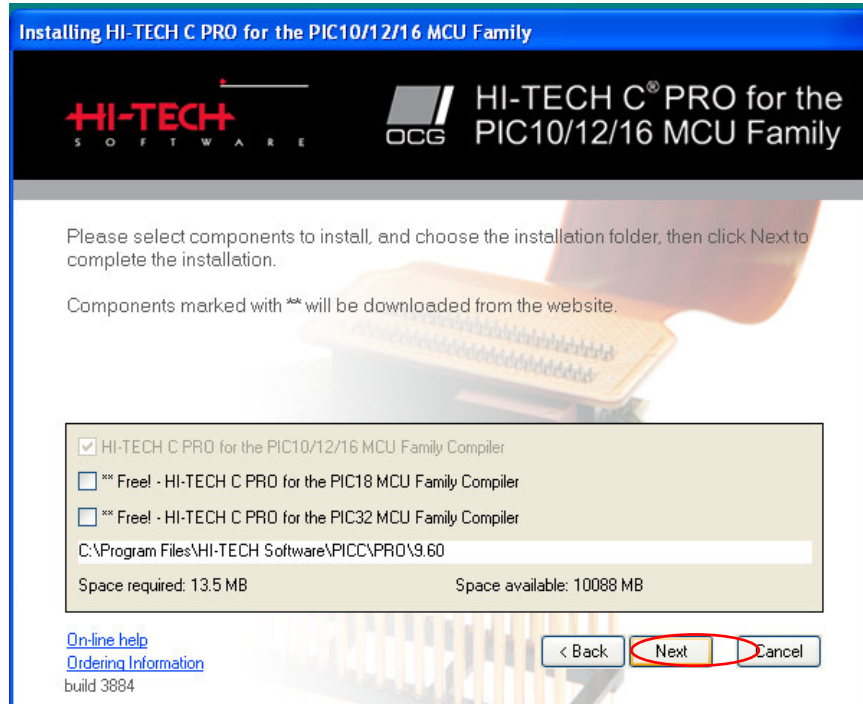
14. Please click *Next* to Install HI-TECH C



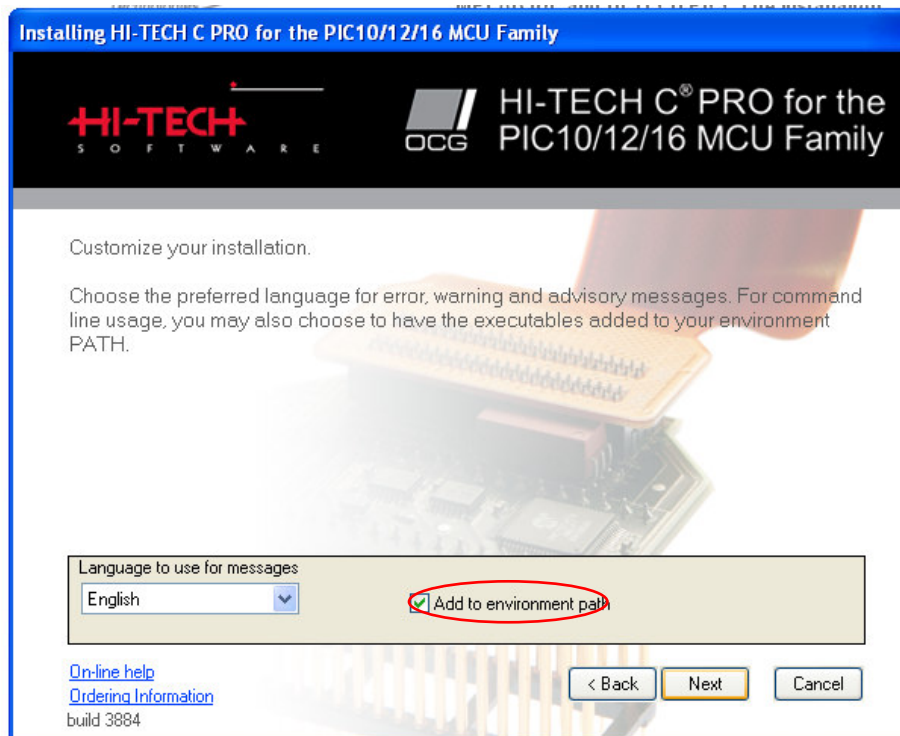
15. Please select *I accept the terms of the license agreement* if it is not selected in the diagram below, and click *Next* to Install HI-TECH C PRO.



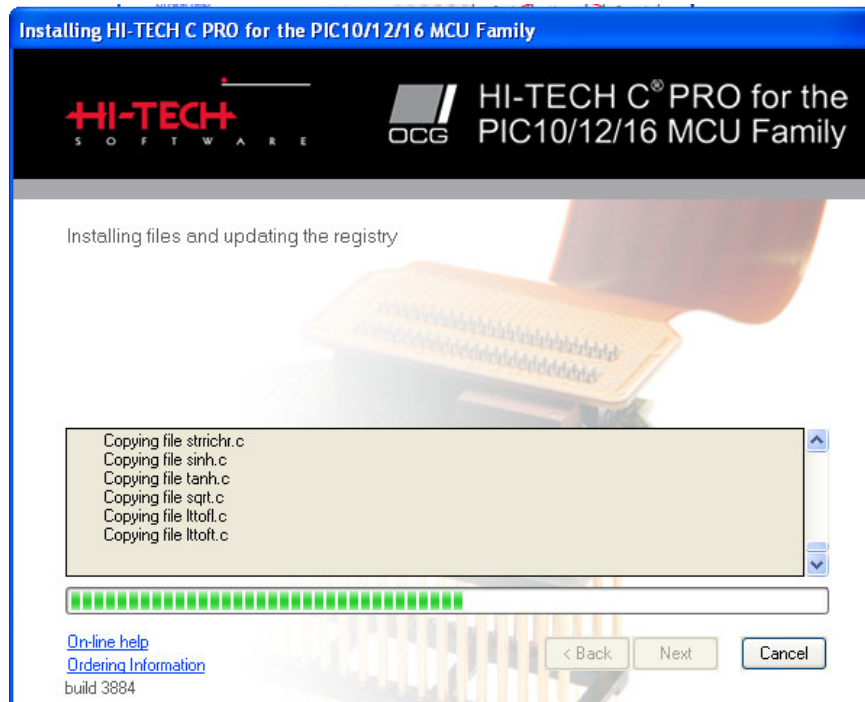
16. Please click *Next*> to proceed.



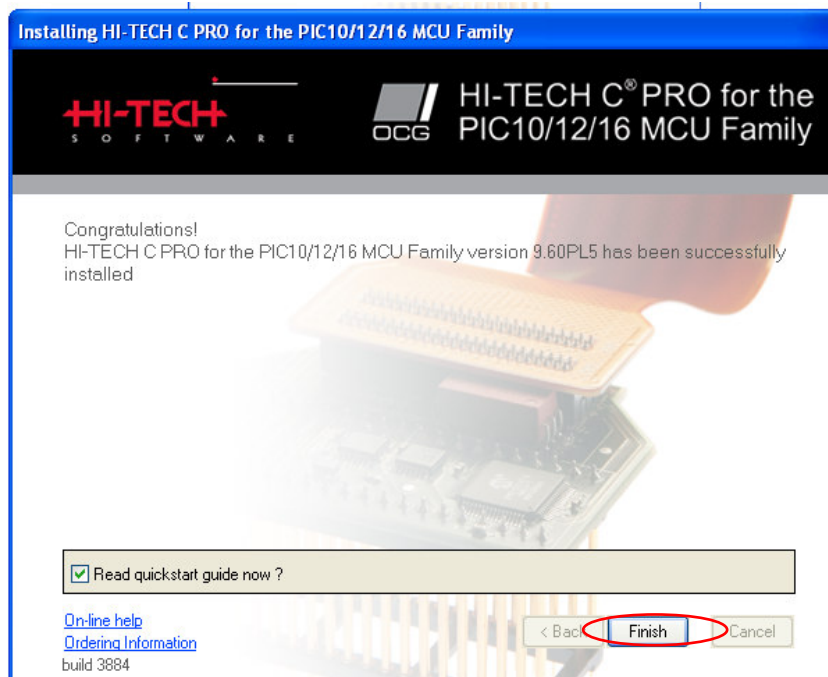
17. Please select *Add to environment path* if it is not selected in the diagram below, and click *Next* to proceed.



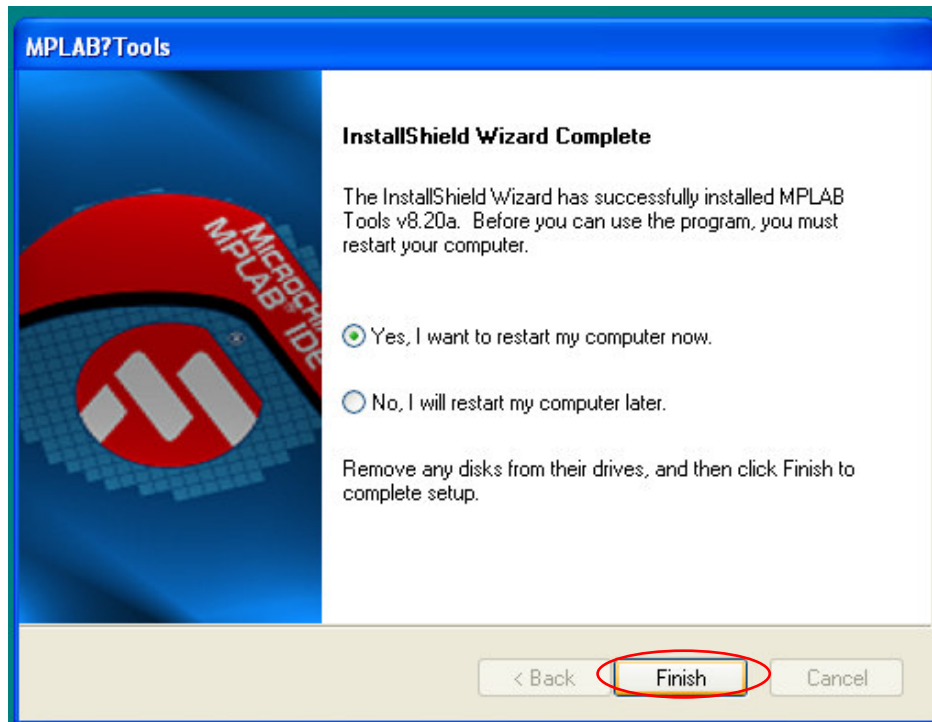
18. Please wait for the installation process to be completed.



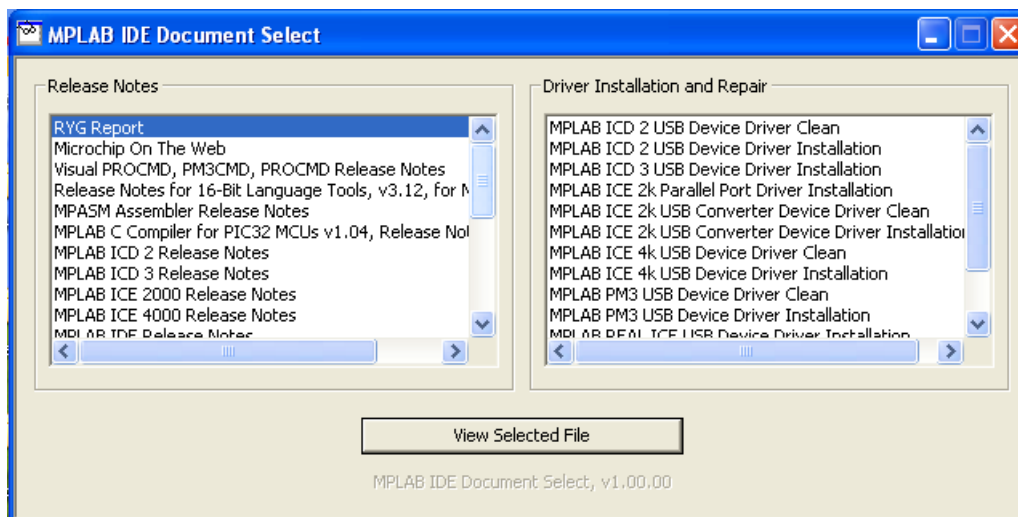
19. Please click *Finish* after successfully installed the HI-TECH C PRO.



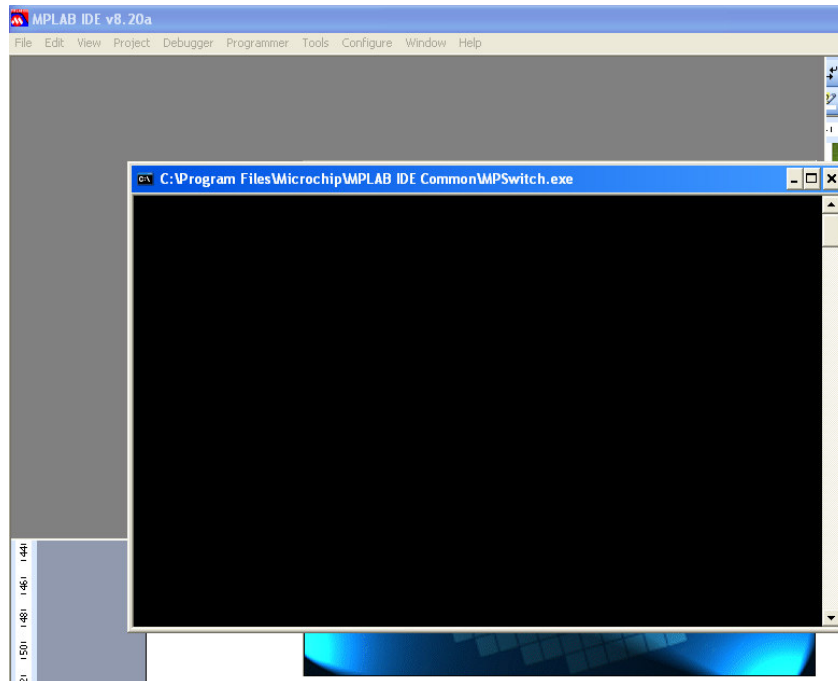
20. The installation of MPLAB V8.20a is completed. Please click *Finish* to exit. User may need to restart the computer just after the installation or restart later.



21. After restart computer, a window *MPLAB IDE Document Select* will pop out, user may view the release notes from Microchip if want to.



22. When open MPLAB IDE, a console window will pop out at the first time after installation. Please wait for awhile, after that the console window will close automatically.



23. The MPLAB IDE will show as diagram below, user may start build your own project.

